

Purpose: To help children to start to think about pets and their different characteristics

KS1

Sheet 1: Pet parade

Discuss the pictures on activity sheet 1. Are all the animals the same size (in real life)? Do they all have the same body covering? Which animal is the odd one out? It could be the fish because it breathes under water or the bird because it flies. Do they all eat the same type of food? Which animal do the children think would be the easiest to care for?

Let the children colour in the title and pictures.

Ask the children to cut out the pictures and words and place them on a separate sheet of paper, matching the correct name to each animal. (If the children are not reading yet, write the first letter of each animal beside its picture as a clue for the whole name).

Let the children stick the words and pictures in place on the page, then draw beside each pet something it might need or like. For example, the cat might like a ball of string to play with, and the dog might like a bone.

Sheet 2: Our favourite pets

Make a list on the board of all the pets owned by the children. Write the number of pets in each category.

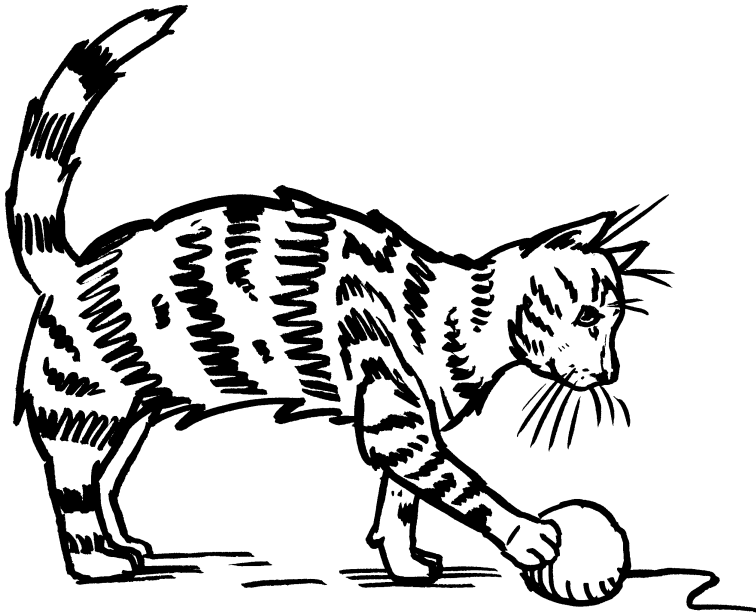
Ask the children to choose their five favourite pets from the board list.

Give each child a copy of the activity sheet. Let them draw pictures of their chosen pets and write each animal's name in the spaces provided.

Next ask the children to turn the table into a graph by colouring in the correct number of boxes to show how many children in the class have each type of pet.

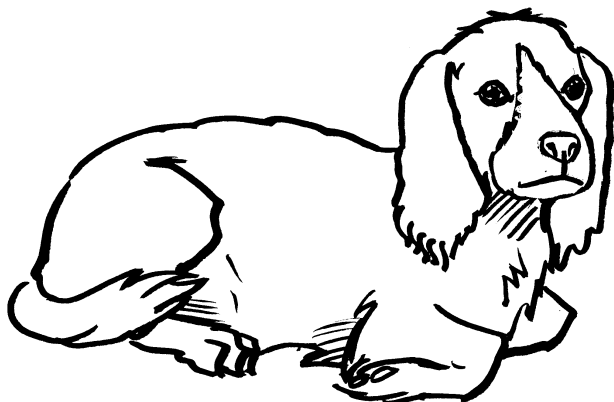
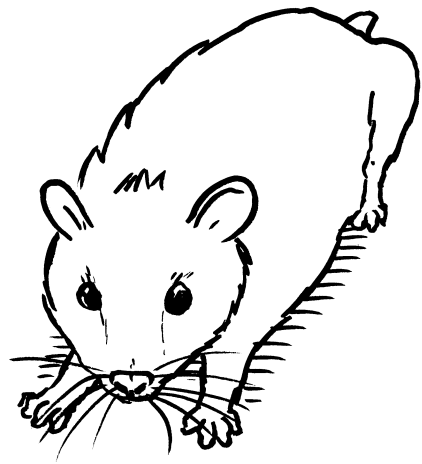
Older children could collect their own data about the number of pets each classmate has and draw their own graphs. (be aware that in a large group this can produce a lot of data.)

Pet Parade

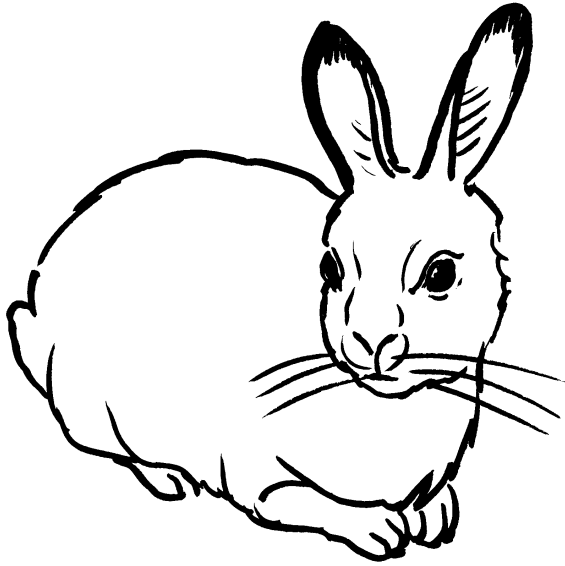


dog

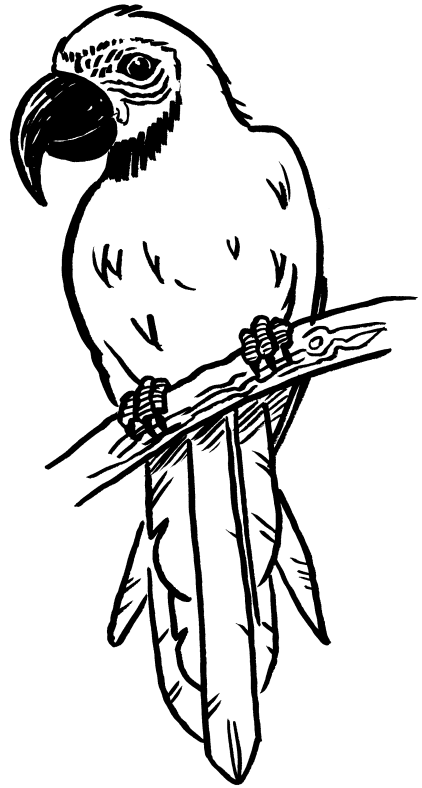
fish



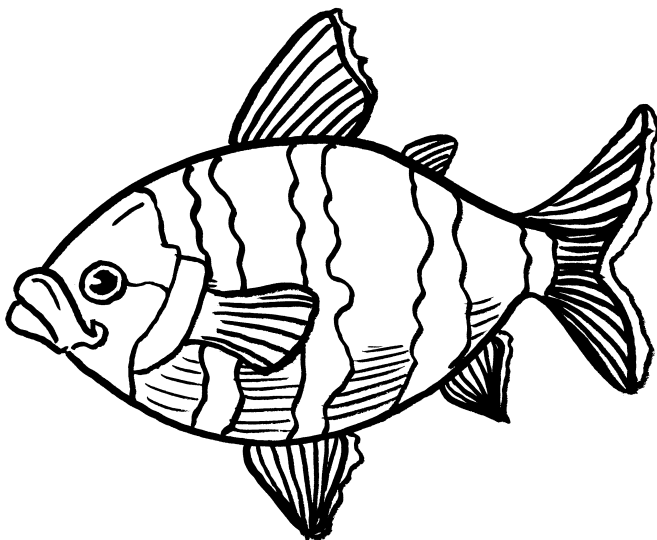
rabbit



parrot



hamster



cat

